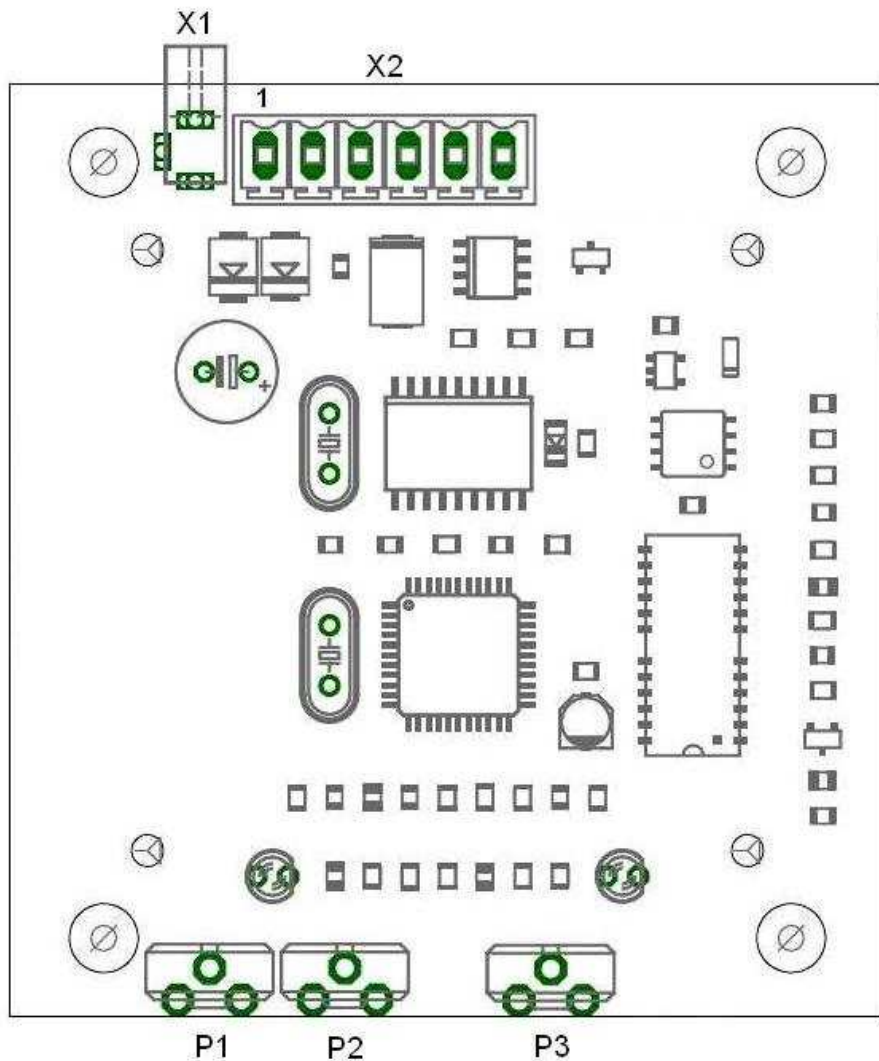


VR27 Connections



X1: Ext. Power connect (if necessary), inside + (10 - 15V)

X2: Funkgerät

- 1 Ground (gray + blank/shielding)
- 2 Speaker (green)
- 3 NF – Modulation (white or yellow)
- 4 PTT – transmit (brown)
- 5 Not used
- 6 +Ub, Power 10 – 15V (yellow or red)

Potis:

- P1 Volume for playing (Mic-Gain)
- P2 Sensitivity for “switch to record”
- P3 DTMF sensitivity, mostly not assembled